

GENERAL NOTES

THE DIMENSIONS AND LEVELS PROVIDED ARE INDICATIVE ONLY. ALL DIMENSIONS ARE IN MILLIMETRES

ALL LEVELS ARE IN METRES

DO NOT SCALE FROM THIS DRAWING

FOR ACTUAL DIMENSIONS PLEASE REFER TO DETAILS PROVIDED BY BENNINGHOVEN UK LTD

MINIMUM ALLOWABLE BEARING PRESSURE REQUIRED BENEATH FOUNDATIONS MARKED 100kN/m^2 IS 100kN/m^2 .

MINIMUM FOUNDATION DEPTH FOR GRANULAR (i.e. NON-COHESIVE) SOILS TO BE 450mm.

MINIMUM FOUNDATION DEPTH FOR COHESIVE SOILS (IN THE ABSENCE OF SIGNIFICANT VEGETATION) TO BE 900mm.

FOR COHESIVE SOILS WHERE THERE ARE ADJACENT TREES REFER BACK TO ENGINEER.

CONSTRUCTION NOTES

GENERAL

ALL CONCRETE THAT MAY COME INTO CONTACT WITH DE-ICING SALTS FROM ROAD VEHICLES TO BE AIR-ENTRAINED CONCRETE.

CONCRETE TO BE USED IN THE WORK TO BE PRESCRIBED MIXES FOR ORDINARY STRUCTURAL CONCRETE IN ACCORDANCE WITH THE REQUIREMENTS OF BS 5328:1981.

CONCRETE: FOUNDATIONS TO BE GRADE C40 UNLESS OTHERWISE NOTED, MINIMUM CEMENT CONTENT 300kg/m^3 . STEEL TROWEL FINISH.

READY MIXED CONCRETE

READY MIXED CONCRETE TO COMPLY WITH THE REQUIREMENTS OF THE SPECIFICATION AND BS 5328.

READY MIXED CONCRETE TO BE SUPPLIED FROM QSRMC APPROVED DEPOT.

WORKABILITY

THE WORKABILITY OF FRESH CONCRETE IS TO BE WITHIN THE LIMITS PERMITTED BY BS 5328.

ALL STRUCTURAL CONCRETE TO BE THOROUGHLY COMPACTED BY VIBRATING POKER OR OTHER APPROVED MEANS TO ENSURE THAT TRAPPED AIR IS FREED AND THE CONCRETE COMPLETELY FILLS THE VOID OR FORMWORK. CONCRETE TO BE THOROUGHLY WORKED INTO CORNERS AND AROUND REINFORCEMENT.

CURING

CONCRETE TO BE PROTECTED DURING THE FIRST STAGE OF HARDENING FROM THE HARMFUL EFFECTS OF SUNSHINE, DRYING WINDS, COLD, RAIN OR RUNNING WATER. THE PROTECTION IS TO BE APPLIED AS SOON AS PRACTICABLE AFTER COMPLETION OF PLACING BY ONE OR MORE OF THE FOLLOWING METHODS.

1. THE CONCRETE SHALL BE COVERED WITH A LAYER OF SACKING, CANVAS, HESSIAN, STRAW MATS OR SIMILAR ABSORBANT MATERIAL, OR A LAYER OF SAND, KEPT CONSTANTLY WET FOR SEVEN DAYS.
2. AFTER THOROUGHLY WETTING, THE CONCRETE SHALL BE COVERED WITH A LAYER OF APPROVED WATERPROOF PAPER OR PLASTIC MEMBRANE KEPT IN CONTACT WITH THE CONCRETE FOR SEVEN DAYS.
3. EXCEPT IN THE CASE OF SURFACES WHICH CONCRETE HAS SUBSEQUENTLY BONDED, THE CONCRETE MUST BE CURED BY APPLICATION OF AN APPROVED LIQUID CURING MEMBRANE. APPLICATION TO BE MADE BY LOW-PRESSURE SPRAY TO THE MANUFACTURERS' INSTRUCTIONS AND AT THE RECOMMENDED RATE OF APPLICATION. ON HORIZONTAL SURFACES, THE CURING MEMBRANE MUST BE APPLIED IMMEDIATELY AFTER PLACING THE CONCRETE, AND ON VERTICAL SURFACES IMMEDIATELY AFTER REMOVING THE FORMWORK.

REINFORCEMENT

STEEL BAR REINFORCEMENT TO COMPLY WITH BS4449. STEEL FABRIC REINFORCEMENT IS TO COMPLY WITH BS 4483.

REINFORCEMENT TO HAVE A MINIMUM COVER OF 50mm TO ALL SIDE UNLESS NOTED OTHERWISE. LAPS TO STEEL MESH REINFORCEMENT TO BE A MINIMUM OF 500mm IN ALL DIRECTIONS.

ALL CUTTING AND BENDING TO BE CARRIED OUT IN ACCORDANCE WITH BS 4466.

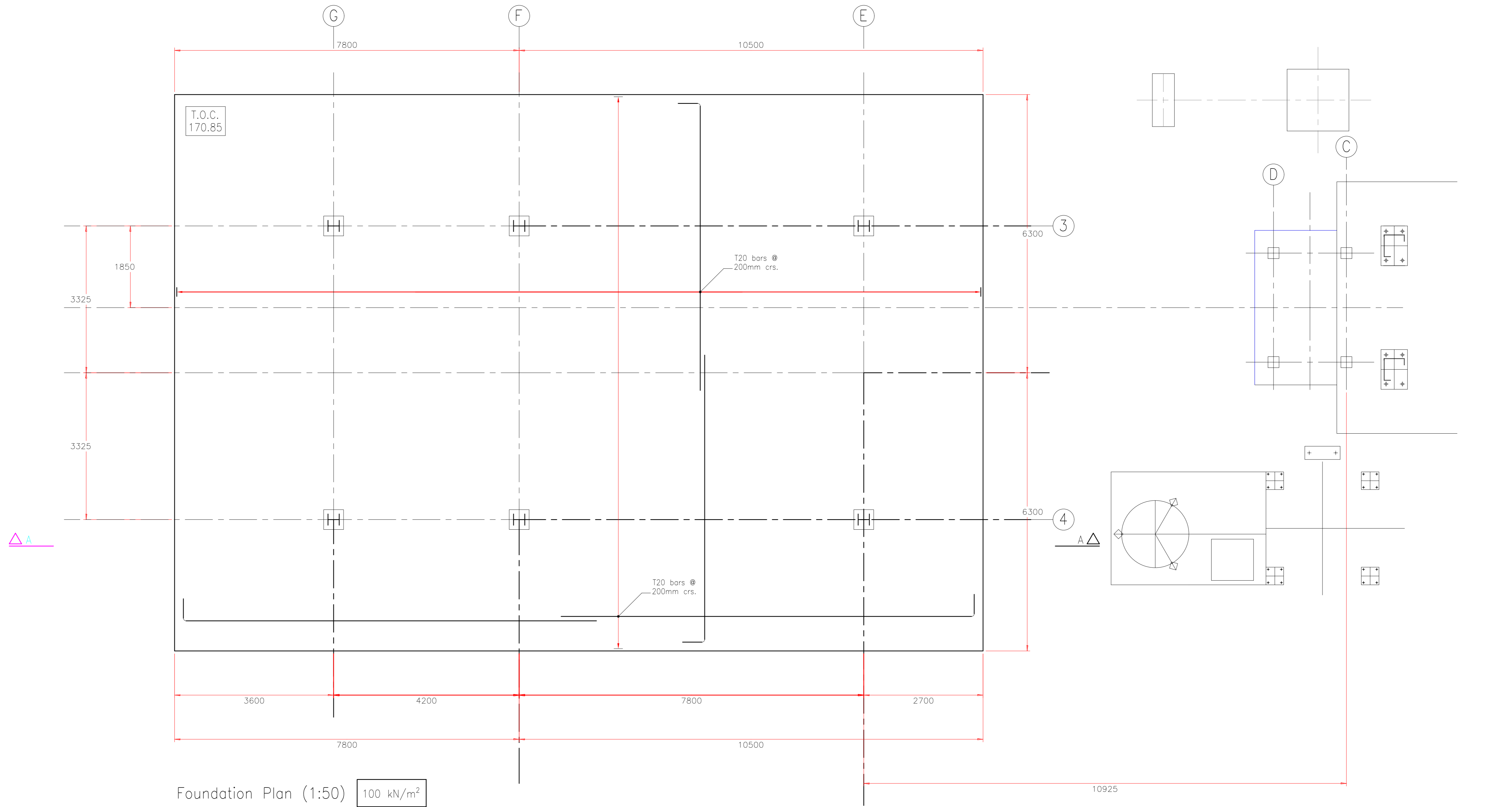
BARS TO BE BENT COLD IN A MANNER THAT WILL NOT INJURE THE METAL AND BARS SHOWING CRACKS OR BRITTLENESS SHALL BE REJECTED.

ALL REINFORCEMENT TO BE FIXED RIGIDLY IN POSITION BY EXPERIENCED STEEL FIXERS, AND THE CONCRETE AND THE COVER SPECIFIED ON THE DRAWINGS AND IN THE NOTES IS TO BE CAREFULLY MAINTAINED.

TYING WIRE IS TO BE THOROUGHLY ANNEALED No 16 SWG SOFT IRON WIRE AND TYING IS TO BE DONE TIGHTLY WITH PLIERS.

REINFORCEMENT IS TO BE FULLY SUPPORTED ON CHAIRS WITH SPREADERS.

CHECK HD EMBEDMENT WITH STRUCTURAL STEELWORK SUPPLIER AND ADJUST MINIMUM FOUNDATION DEPTH IF NECESSARY.



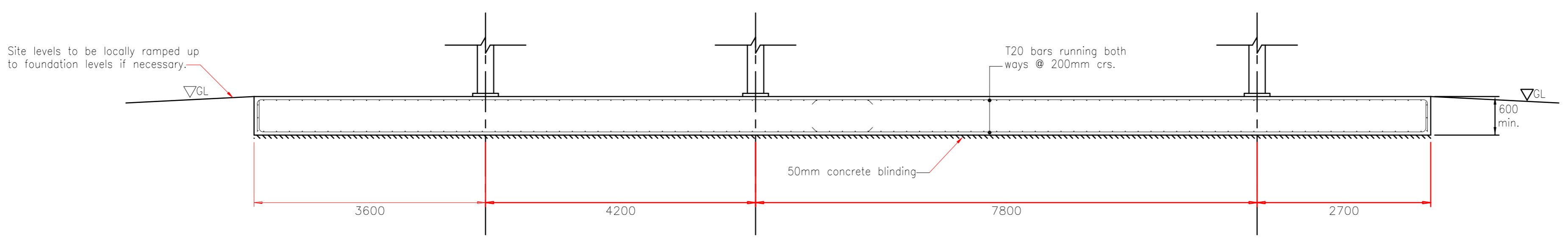
Foundation Plan (1:50) 100 kN/m^2

Mixed Material Storage System Foundation

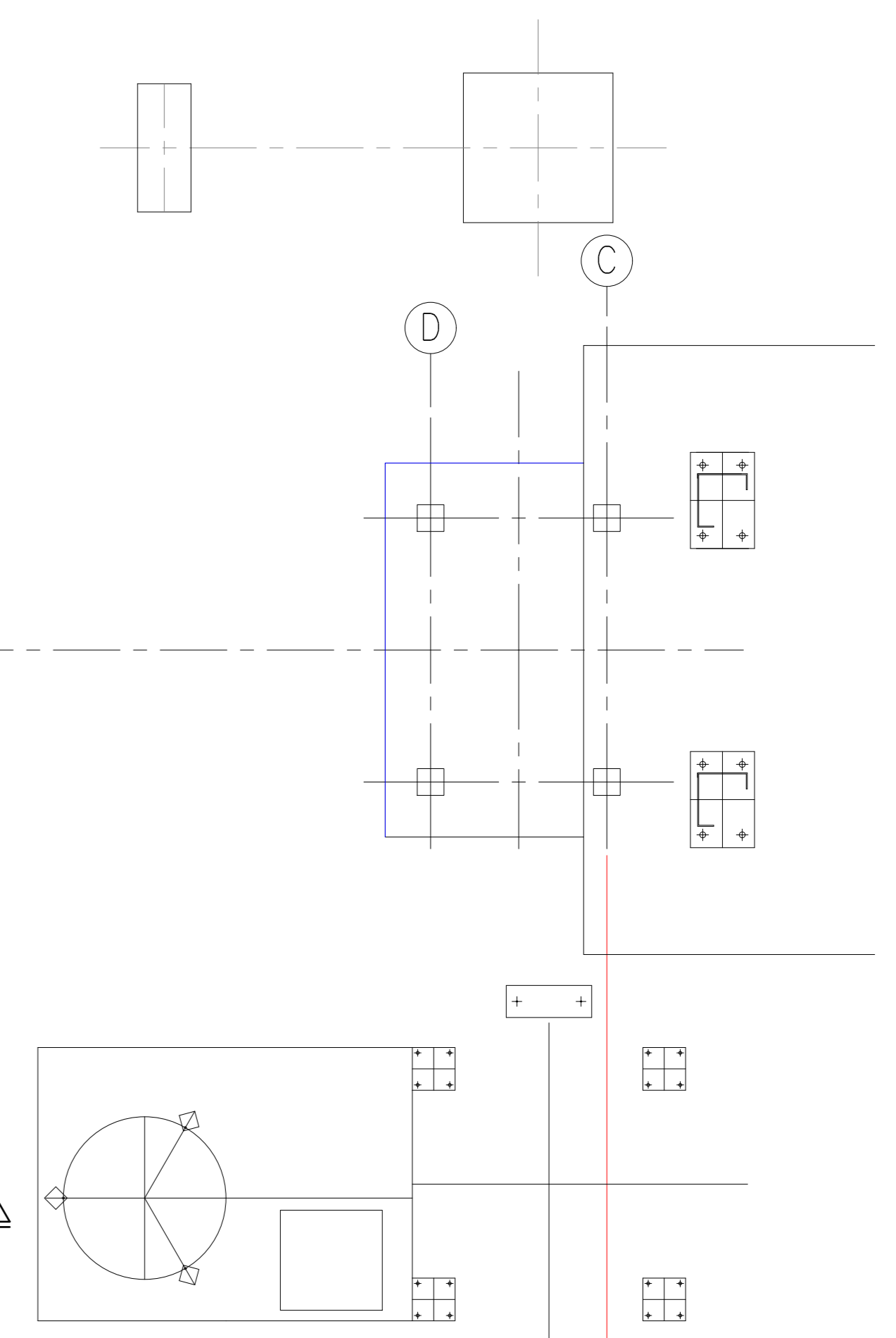
Minimum 600mm thick Grade C40 concrete slab with T20 bars running each way top and bottom.

Minimum 50mm cover to reinforcement.

For setting out dimensions refer to Benninghoven UK Ltd drawings.



Section A-A (1:50)



B	DETAILS REVISED FOLLOWING ISSUE OF FINAL LOADINGS	07/03
A	FIRST ISSUE	05/03
REV	ISSUE	DATE
<input type="radio"/> PRELIMINARY DRAWING STATUS <input type="radio"/> FOR TENDER <input type="radio"/> FOR CLIENTS APPROVAL <input type="radio"/> FOR CONSTRUCTION <input type="radio"/> FOR BUILDING REGULATIONS/PLANNING <input type="radio"/> AS BUILT		

USA 4 The Pass Courtyard
43 - 45 Market Street
Ashby de la Zouch
Leicestershire
LE65 1AG
Telephone 01530 560575
Fax 01530 560636

CLIENT *****

PROJECT *****

TITLE *****

DATE	MAY 07	DRAWN	NM	DRAWING NO	REV
SCALE	AS SHOWN	CHECKED	KS	07H05/09/07	B